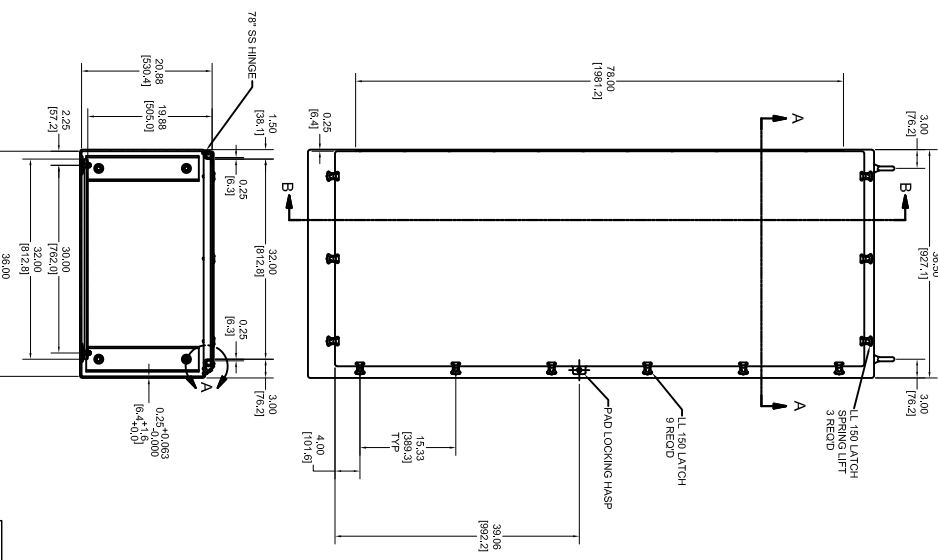
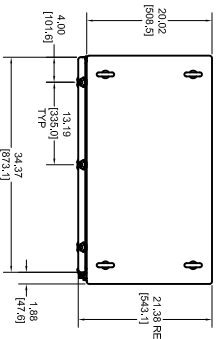
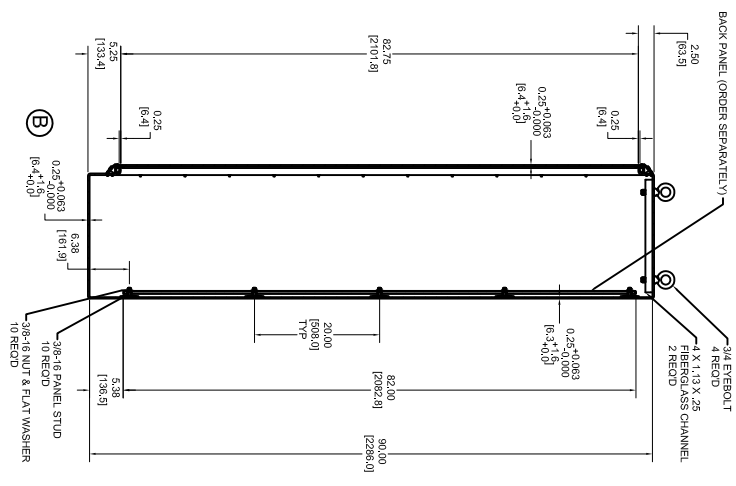


DETAIL A
SCALE 1/2



SECTION A-A

Parts List				Parts List			
ITEM	QTY	PART NUMBER	DESCRIPTION	ITEM	QTY	PART NUMBER	DESCRIPTION
1	15	RNCTN22X29	PACKAGING	14	24	RMWV6	LATCH RIVETS
2	5	RMCTN38X48	PACKAGING	15	24	RMWV8	HINSE RIVETS
3	19.88 FT	RN625/INF-FORN	RINGS/INF-FORN	16	1	RN625/20X1/2/HCS	SCREW FOR HASP PIN
4	1	RN625/38X38	GASKET	17	1	RN625/29	EYE-BOLT
5	6.31 FT	RN625/INF-FORN	HASP PIN	18	24	RMWAS28X178X028	EYE-BOLT WASHERS
6	1	RN625/150WT	HINGE	19	10	RMWAS38	LOCK WASHERS FOR BP STUDS
7	2	RN625/150WT	HINGES	20	10	RMWAS38L	LOCK WASHERS FOR BP STUDS
8	3	RN625/150WT	HINGES	21	4 FT	RN625/17X1X1-18C	FIBERGLASS CHANNEL
9	3	RN625/150WT	HINGES	22	10	RMWAS38L	LOCK WASHERS FOR BP STUDS
10	1	WPN900382D80X	WPN900382D80X	23	10	RN625/17X1X1-18C	FIBERGLASS CHANNEL
11	4	RMWU13/4-10	RMWU13/4-10	24	11	RMWASVAV900C10L	WASHERS FOR HINSE BASE
12	10	RMWU3/8-10	RMWU3/8-10	25	26	RMWASVAV900C10L	WASHERS FOR HINSE BASE
13	24	RMWV6	RMWV6	26	1	RMWAS98	ROUNDING SHEET



SECTION B-B

NOTES				MATERIALS			
1. UL TYPE AK BFC B96 WALL THK. 1/4"				2. ALL DIMENSIONS ARE UNLESS SPECIFIED			
EXTENSION & INTERIOR GLAZER GRAY				3. FINISH: BLDG MEDIUM			
4. DOOR WEIGHT: 150 LB				5. DOOR HEIGHT: 78" (1981.2)			
6. DOOR WIDTH: 39" (992.2)				7. DOOR DEPTH: 3" (76.2)			
8. DOOR FINISH: BLDG MEDIUM				9. DOOR COLOR: GRAY			
9. DOOR WEIGHT: 150 LB				10. DOOR HEIGHT: 78" (1981.2)			
11. DOOR WIDTH: 39" (992.2)				12. DOOR DEPTH: 3" (76.2)			
13. DOOR FINISH: BLDG MEDIUM				14. DOOR COLOR: GRAY			

STAHLIN ENCLOSURES	48899	BUILDING MEDIUM
SCALE: 1/10	PART NAME: ENCLOSURE	PART NO.: N90320FSHW1